

Types of information and actions required

The city will proactively release evacuation information. Take the initiative to obtain that information and protect your own life.

[Weather Changes] [Alert Level] [Evacuation Information and Actions to Take]

Forecast issued for heavy rain, typhoons, etc.



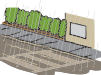
Alert Level 1 **Probability of Warnings** (announced when heavy rainfall or typhoons are forecasted in the near term) Improve your disaster preparedness. Announced by the Japan Meteorological Agency

Rainfall begins



Alert Level 2 **Flood Advisories, Heavy Rain Advisories, Etc.** Confirm your evacuation plan (sites, routes, supplies, etc.). Announced by the Japan Meteorological Agency

Risk of disaster



Alert Level 3 **Evacuation of the Elderly, Etc.** Issued by the city **Elderly people and others should evacuate from affected areas**

- (1) The elderly, disabled, and others **who need time to evacuate should start evacuating.**
- (2) Those assisting individuals in the above group should **evacuate together with them.**
- (3) Other individuals should **prepare to evacuate.**

High risk of disaster



Alert Level 4 **Evacuation Instruction** Issued by the city **All residents should evacuate from affected areas**
All residents should start evacuating from affected areas.

Be sure to evacuate by Alert Level 4!

Disaster occurrence/ Disaster impending

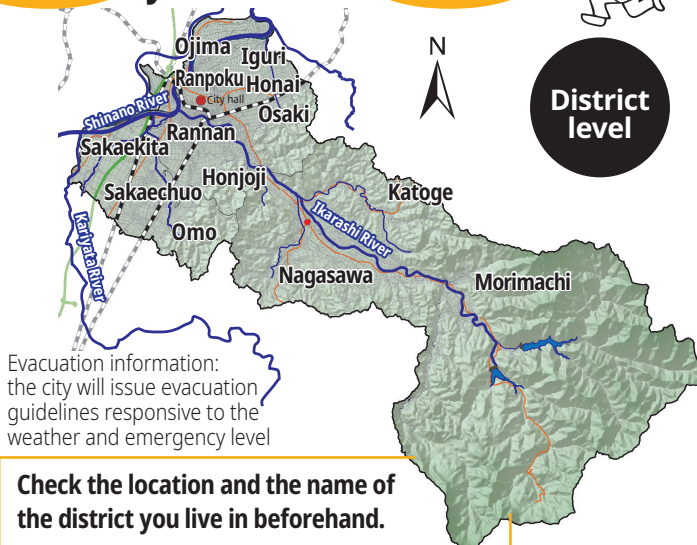


Alert Level 5 **Emergency Safety Measures** Issued by the city **Your life is in danger! Protect yourself immediately!**

- (1) **Immediately run for the evacuation site** if you are in the midst of evacuating.
- (2) If you have yet to evacuate, **adopt the minimum life-saving measures such as evacuating to the second floor of a safe building.**

The above is only a guideline. Pay attention to how the disaster unfolds and act accordingly.

Evacuation information will be issued by district



Evacuation information: the city will issue evacuation guidelines responsive to the weather and emergency level

Check the location and the name of the district you live in beforehand.



Please register and review the information in advance so that you can obtain information from the city in the event of a disaster.

Please use the below services and make use of your device or browser's translation features as necessary.



Sanjo City Email Service
mail.sanjo-city@raidan2.ktaiwork.jp
Send a blank email to set up



Sanjo City Official LINE Account
Add @sanjo-city as a friend



Sanjo City X (formerly Twitter)
Follow @sanjo_city



NHK WORLD-JAPAN
https://www3.nhk.or.jp/nhkworld/
News programs broadcasted in 19 languages



WEB

iOS Android



Download app



Safety tips
Disaster information notifications in 14 languages

iOS Android



Download app

For inquiries regarding this Disaster Prevention Leaflet, please contact:
Disaster Prevention Office, Administrative Division,
General Affairs Department, Sanjo City
2-3-1 Asahicho, Sanjo-shi, Niigata 955-8686 Phone: 0256-34-5511 (main)
Issued in: March 2024



Sanjo City

English Edition

Please read this alongside the Disaster Response Guidebook for Heavy Rainfall in Multiple Languages.

Scan the QR code for the Disaster Response Guidebook for Heavy Rainfall in Multiple Languages



URL: https://www.city.sanjo.niigata.jp/bosai_bohan/bosai/nigoronosonae/gaidomappuhazardmap/8316.html

Be prepared for disasters

Disaster Prevention Leaflet

Protect Your Life

This Disaster Prevention Leaflet contains information on what you need to know and the actions you need to take in the event of heavy rainfall. Please make use of this leaflet to protect the lives of you and your loved ones in the event of a disaster.

Check the maps in the Disaster Response Guidebook for Heavy Rainfall in Multiple Languages and write down the information you arrive at in the "Notes for Responding to Heavy Rainfall for My Home" section on the back of this leaflet.



Check the rivers that are most likely to affect your home.



Awareness Map

→See Pages 3 and 4 of the Guidebook in Multiple Languages



Check if you can stay in your home or if you should evacuate during heavy rainfall.



Escape Map

→See Pages 11 to 22 of the Guidebook in Multiple Languages

Where to evacuate to?



When and where to evacuate to depends on the situation on the ground. Going to a city-designated evacuation shelter such as a school or community center is not the only evacuation option. Consider a few different possible evacuation sites in advance of heavy rainfall. Also, before deciding to evacuate, first consider staying put in your home if it is possible to do so.

Q.Can you stay in your home during heavy rainfall?

☐ Can stay in your home

Making decisions with the Escape Map (Page 9 of the Guidebook in Multiple Languages)

Final decision
○ Stay put

Check the relevant Escape Map on Pages 11 to 22 of the Guidebook in Multiple Languages to determine if you can stay in your home during heavy rainfall.

☐ Cannot stay in your home

Making decisions with the Escape Map (Page 9 of the Guidebook in Multiple Languages)

Final decision

~~○ Staying in your home~~

Before flooding occurs

○ Evacuate immediately

○ Evacuate early

○ Evacuation required

If you can stay in your home

First consider staying put in your home.

Evacuation site



Upper floors of your home where you can stay after flooding occurs

● If staying in your home, make sure you have prepared sufficient drinking water, food, etc., as you may be periodically unable to use your utilities (water, electricity, gas, toilets, etc.)

The area around the building may be submerged in water after a flood. Going outside after a flood is dangerous.



It is a good idea to stockpile at least three days' worth of supplies.

*In anticipation of an emergency, consider a few different possible evacuation sites in advance even if you can stay in your home.

If you cannot stay in your home

Consider a few different possible evacuation sites in advance.

Evacuation site



Relative's/friend's house or private accommodation facility that is safe

Evacuation site



Evacuation shelter in the city

*Check the Sanjo City website to find out the status of evacuation shelters.

Make sure to evacuate to a safe location before flooding occurs. Going outside after a flood is dangerous.

You cannot stay in your home! However, if you did not escape in time...

Evacuation site

Head to a tall and sturdy building nearby or a spot where you will be safe

● It is dangerous to evacuate in heavy rain, strong winds, or when it is dark at night. Do not evacuate if it is unreasonable to do so, and protect yourself in a nearby spot that is as safe as possible.



Scan the QR code for the Disaster Response Guidebook for Heavy Rainfall in Multiple Languages



Notes for Responding to Heavy Rainfall for My Home

Look at the maps in the Disaster Response Guidebook for Heavy Rainfall in Multiple Languages, consider what may happen during a disaster and the possible evacuation sites for your home, and write them down.



Check the Awareness Map and the Escape Map to see how your home may be affected by a disaster.

● Which rivers will affect you if they flood?

→ See Pages 3 and 4 of the Guidebook in Multiple Languages

☐ Shinano River ☐ Ikarashi River ☐ Kariyata River ☐ Gejo River
☐ Fusetani River ☐ Kakuma River ☐ Odaira River ☐ Kaibami River/Sai River

● Will you be affected by landslides?

→ See Pages 11 to 22 of the Guidebook in Multiple Languages

☐ Yes ☐ No

● How many floors will the flood water reach?

_____ floors



Review the action guidelines after going through the "Making decisions with the Escape Map" flowchart.

● Can you stay in your home during heavy rainfall?

→ See Page 9 of the Guidebook in Multiple Languages

☐ Can stay in your home

○ Stay put

☐ Cannot stay in your home

~~○ Staying in your home~~

Before flooding occurs
Go to the upper floors of your home where you can stay after flooding occurs
▲ First consider staying put in your home

After flooding occurs
Go to the upper floors of your home where you can stay after flooding occurs
▲ Going outside is dangerous

Before flooding occurs
Check the flowchart
☐ Evacuate immediately
☐ Evacuate early
☐ Evacuation required
Go to a safe location outside your home
▲ Consider a few different possible evacuation sites in advance

After flooding occurs
Make sure to finish evacuating before flooding occurs
▲ Do not stay in your home
▲ Going outside is dangerous
If you did not escape in time
Go to a tall and sturdy building nearby



Consider a few different possible evacuation sites in advance.

Evacuation site

Stockpile water, food, etc.

Upper floors of your home where you can stay after flooding occurs or a tall and sturdy building nearby

Evacuation site

Secure your own evacuation site

Relative's/friend's house or private accommodation facility that is safe

Evacuation site

Bring along your own necessities

Evacuation shelter in the city